




dark grey

20.W274 | WK

WK 274

Heavy Men's Workwear Piqué Polo



HEAVY COMBED 60°

Material: 200g/m², 65% polyester, 35% combed cotton

Description: Collar and cuffs in rib knit, 3 button-placket with tone-in-tone buttons, necktape in contrasting color, double seams on hem, reinforced side slits with contrasting band, antipilling, SilverPlus® Finish (antibacterial and anti-odor treatment), 60° washable, suitable for tumble drying at low temperature, do not dry clean

Sizes: S - M - L - XL - XXL - 3XL - 4XL - 5XL

Tariff number: 61052010 | Country of origin: Bangladesh

 30  5

Available colors:





20.W274 | WK

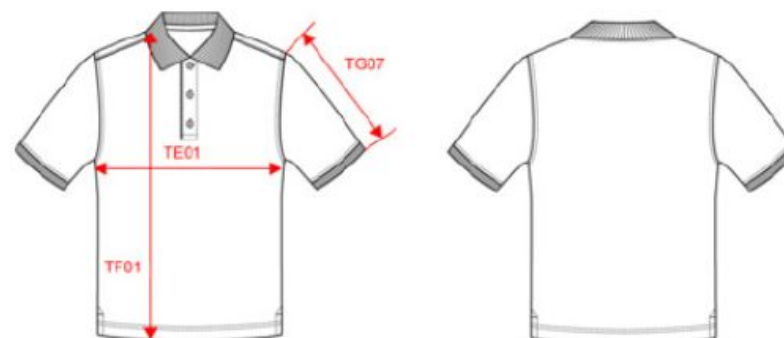
WK 274

Heavy Men's Workwear Piqué Polo



Size chart:

Dimensions (cm)



Measurements in cm	S	M	L	XL	XXL	3XL	4XL	5XL
TE01 - 1/2 chest width at 1.5cm below armhole	50.00	53.00	56.00	59.00	62.00	65.00	68.00	71.00
TF01 - Total height from HSP	70.00	72.00	74.00	76.00	78.00	80.00	82.00	84.00
TG07 - Short sleeve length	22.25	23.00	23.75	24.50	25.25	26.00	26.75	27.50



dark grey